

Contents

Introduction.....	1
Welcome	2
The PhotoNow! Program	3
System Requirements	4
 PhotoNow! Functions	 5
View Options	6
Zoom	6
Photo comparison windows	6
Fixing Photos	7
Auto Fix	7
Manual Fix	7
Rotate	8
Crop	8
Redeye Removal	9
Special Effects	9
Resize	10
 Technical Support	 11
Before Contacting Technical Support	12
Web Support	13
Telephone Support	13
Email Support	14
 Index	 15

Chapter 1:

Introduction

This chapter introduces the CyberLink PhotoNow! program, starting with a description of the program's features, followed by a look at the program interface. The chapter ends with a list of recommended system minimum requirements.

This chapter contains the following sections:

- Welcome on p.2
- The PhotoNow! Program on p.3

Welcome

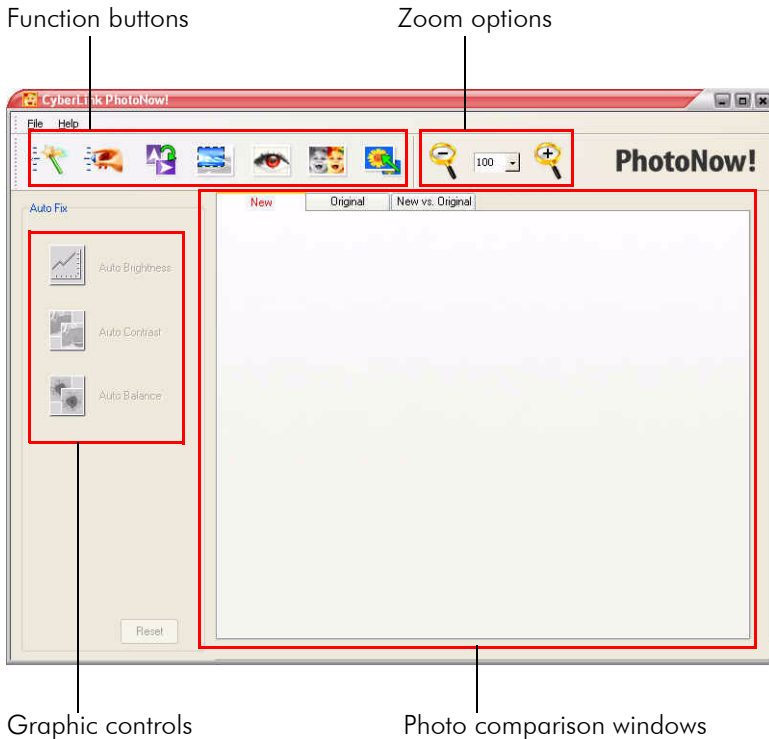
Welcome to the CyberLink family of home entertainment products! CyberLink PhotoNow! allows you to touch-up your photos by adjusting brightness and contrast, removing redeye, and more.

Some of PhotoNow!'s features are described below.

- automatic adjustment of levels, contrast, and equalization
- manual adjustment of brightness, contrast, saturation, and sharpness
- automatic and manual red eye removal
- crop, resize, and rotate functions
- customizable special effects

The PhotoNow! Program

When you first open PhotoNow!, the program appears as follows:



Note: If PhotoNow! is opened from within a different program, it will automatically open a specified photo for editing, and you may not be able to open other photos.

System Requirements

The system requirements listed below are recommended as minimums.

Minimum System Requirements

OS	<ul style="list-style-type: none">• Microsoft Windows 98 SE, Windows ME, Windows 2000, Windows XP Professional or Home Edition, Vista
Screen Resolution	<ul style="list-style-type: none">• 800 x 600
Memory	<ul style="list-style-type: none">• 128MB RAM
CPU	<ul style="list-style-type: none">• Pentium III 800Mhz

Chapter 2:

PhotoNow! Functions

CyberLink PhotoNow! offers a number of functions for viewing and fixing photos, including zoom options, photo comparison windows, resize and crop options, redeye removal, automatic and manual adjustments, and a variety of special effects.

This chapter contains the following sections:


- View Options on p.6
- Fixing Photos on p.7


View Options

PhotoNow! has several view options to allow you to zoom in on your photo for a closer look, zoom out to see the whole picture, and to compare versions of the photo before and after modifications have been applied. Descriptions of the view options are below.

Zoom

You can zoom in and out on a photo from 10% to 800%.

To zoom out, click  .

To zoom in, click  .

You can also select a preset magnification level from the drop-down box.

Photo comparison windows

When you open a photo in PhotoNow!, three tabs are available above the photo. These tabs open windows that allow you to compare the photo before and after modification. Descriptions of the windows are below:

- **New:** Displays the photo with the current modification applied.
- **Original:** Displays the photo as it appears before the current effect is applied, but including any modifications that have previously been applied.
- **New vs. Original:** Displays the photo with the new modification applied on the left and the original photo on the right (including any modifications that have previously been applied).

You can drag the photo inside the window to view different portions of the image. If you open the New vs. Original window, both versions of the image move simultaneously as you drag.

Fixing Photos

PhotoNow! offers a number of automatic and manual options for fixing photos. These options are described in the following section.

Note: If you are dissatisfied with the results you obtain when modifying a photo, click **Reset** to undo the effect that you have just applied. This resets the photo to the state it was in when you opened the photo in the current option, but includes any modifications that were previously applied.

Auto Fix

PhotoNow! offers the following automatic options for fixing photos:

- **Auto Brightness:** Automatically adjusts the brightness of a photo.
- **Auto Contrast:** Automatically adjusts the contrast of a photo.
- **Auto Balance:** Automatically adjusts both the brightness and the darkness of a photo.

Note: Only one of these options can be applied to the photo at one time - clicking a different option undoes the previous option. To add more than one option, apply the first option, open a different function, then return and apply the second option.

Manual Fix


PhotoNow! offers the following manual options for fixing photos:

- **Brightness:** Drag the slider to the left or right to decrease or increase the brightness of a photo.
- **Contrast:** Drag the slider to the left or right to decrease or increase the contrast of a photo.
- **Saturation:** Drag the slider to the left or right to decrease or increase the color saturation (depth of color) of a photo.
- **Sharpness:** Drag the slider to the left or right to decrease or increase the sharpness of a photo.

Rotate

You can rotate a photo 90 degrees to the left or right.

Click  to rotate the photo 90 degrees to the right.

Click  to rotate the photo 90 degrees to the left.

Crop

Use the crop function to remove unwanted portions of a photo. PhotoNow! offers several options for cropping unwanted portions.

When you select a cropping option, a resizable cropping box opens in the middle of the photo. Resize and position the cropping box to include the portion of the photo you want to keep.

Note: You must click **Apply** in order for this option to take effect.

The different crop options are as follows:

- **Portrait:** Opens a vertical cropping box that maintains a 3:4 aspect ratio.
- **Landscape:** Opens a horizontal cropping box that maintains a 4:3 aspect ratio.
- **Original:** Opens a cropping box that maintains the photo's original aspect ratio.
- **Free:** Opens a cropping box that can be freely resized in any direction.
- **Crop Size:** Crops the photo to the number of pixels of the new width and height that you enter.

Note: The **Crop Size** option uses the shape of the cropping box of the currently selected cropping option.

Redeye Removal

Redeye, caused by flash photography, is a common nuisance in photos. PhotoNow! offers two methods for removing redeye:

- **Auto Redeye Removal:** Clicking **Auto Redeye Removal** automatically removes the redeye from a photo.

Note: If the subject's head is not oriented to the top of the photo, or if the subject's face is in profile, the automatic option may not adequately remove the red. In such a case, it is recommended to use the manual option.

- **Manual Redeye Removal:** Clicking **Manual Redeye Removal** opens a box containing a circle that can be resized and repositioned over each eye in turn to remove the red manually. (You may find it helpful to zoom in to do this.)

Note: You must click **Apply** in order for this option to take effect. You can apply this effect as many times as you want. If you want to undo the effect, click **Undo**. You can continue to click **Undo** to undo each application of the effect in reverse order.

Special Effects

PhotoNow! offers several special effects for modifying your photos:

- **Oil Painting:** This effect renders a photo as an oil painting. Change the **Stroke length** and **Brush size** options to vary the effect.
- **Pencil Sketch:** This effect renders a photo as a black and white pencil sketch. Change the **Stroke length** and **Brush size** options to vary the effect.
- **Spotlight:** This effect adds a spotlight to the middle a photo. Drag the spotlight to the desired location and stretch the spotlight to the desired size. Change the **Intensity** option to vary the effect.
- **Mosaic:** This effect adds a square of mosaic blocks (of the type often used to hide the identity of persons in a photograph) to the middle a photo. Drag the mosaic to the desired location and stretch the mosaic to the desired size. Change the **Cell size** option to vary the effect.

Note: You can apply this effect as many times as you want. If you want to undo the effect, click **Undo**. You can continue to click **Undo** to undo each application of the effect in reverse order.

- **Monochrome Tint:** This effect discards a photo's color information and renders it as a tinted black and white photo. Change the **Intensity** option to vary the effect.
- **Blur:** This effect removes the hard edges between lines in a photo, blurring details. Change the **Intensity** option to vary the effect.

Note: Only one of these effects can be applied to the photo at one time - clicking a different effect undoes the previous effect. To add more than one effect, apply the first effect, open a different option, then return and apply the second effect.

Resize

PhotoNow! offers options for resizing photographs:

Note: You must click **Apply** in order for these options to take effect.

- **Resize by percentage:** Enter a resize value as a percentage, then click **Apply**. (This option maintains the ratio between the width and height of the photo.)
- **Resize by pixels:** Enter the number of pixels of the new width and height of the photo, then click **Apply**. The photo is resized to these dimensions. Check the **Keep aspect ratio** option to maintain the ratio between the width and height of the photo.

Technical Support

This chapter contains technical support information. It includes all the information to find the answers you need to assist you. You may also find answers quickly by contacting your local distributor/dealer.

This chapter contains the following sections:

- "Before Contacting Technical Support" on page 12
- "Web Support" on page 13
- "Telephone Support" on page 13
- "Email Support" on page 14

Before Contacting Technical Support

Please take advantage of one of CyberLink's free technical support options:

- consult the User Guide or the online help installed with your program.
- refer to the Frequently Asked Questions (FAQs) in the Support section of the CyberLink Web site.

http://www.cyberlink.com/multi/support/product_faq_home.jsp

The FAQs may have information and helpful hints that are more current than the User Guide and online help.

When contacting technical support by email or phone, please have the following information ready:

- registered **CD-key** (located on your CD case)
- the product name, version and build number, which generally can be found by clicking on the product name image on the user interface
- the version of Windows installed on your system
- hardware devices on your system (capture card, sound card, VGA card) and their specifications
- the wording of any warning messages that were displayed (You may want to write this down or take a screen capture)
- a detailed description of the problem and under what circumstances it occurred

Web Support

Solutions to your problems are available 24 hours a day at no cost on the CyberLink web sites:

Note: You must first register as a member before using CyberLink web support.

CyberLink provides a wide range of web support options, including FAQs and a user community forum, in the following languages:

Language	Web Support URL
English	http://support.gocyberlink.com
Traditional Chinese	http://tw.cyberlink.com/chinese/cs/support/index.jsp
Simplified Chinese	http://cn.cyberlink.com/chinese/cs/support/index.jsp
Japanese	http://jp.cyberlink.com/english/cs/support/new_site/support_index_jpn.jsp

Note: A community forum and some other limited web support features are also available in German.

Telephone Support

In order to provide the best solution to our end-users, **Voice Support** is part of the service we provide in the following languages:

Language	Voice Support URL
Chinese	http://tw.cyberlink.com/chinese/cs/support/voice_support.jsp

Language	Voice Support URL
English	http://www.cyberlink.com/english/cs/support/new_site/voice_support.jsp
French, German, Italian, Spanish	http://de.cyberlink.com/multi/program/page/_page_display.jsp?seqno=173
Japanese	http://jp.cyberlink.com/english/cs/support/new_site/support_index_jpn.jsp

Email Support

Email support is available in a variety of languages, including through the use of the technical inquiry form.

See the following list for contact information for specified languages.

Language	Web Support URL
Traditional Chinese	http://tw.cyberlink.com/english/cs/support/form/index.jsp
English	http://www.cyberlink.com/english/cs/support/form/index.jsp
French, German, Italian, Spanish	goCyberlink@aixtema.de

Index

A

Auto Balance 7
Auto Brightness 7
Auto Contrast 7
Auto Fix 7
Auto Redeye Removal 9

B

Blur effect 10
Brightness 7

C

Contrast 7
Crop 8
Crop Size crop option 8

F

Free crop option 8

L

Landscape crop option 8

M

Manual Fix 7
Manual Redeye Removal 9
Monochrome Tint effect 10
Mosaic effect 9

N

New version window 6
New vs. Original version window 6

O

Oil Painting effect 9
Original crop option 8
Original version window 6

P

Pencil Sketch effect 9
Portrait crop option 8

R

Redeye Removal 9
Resize 10
 by percentage 10
 by pixels 10
Rotate 8

S

Saturation 7
Sharpness 7
special effects 9
Spotlight effect 9

CyberLink PhotoNow!

system requirements 4

Z

zoom options 6