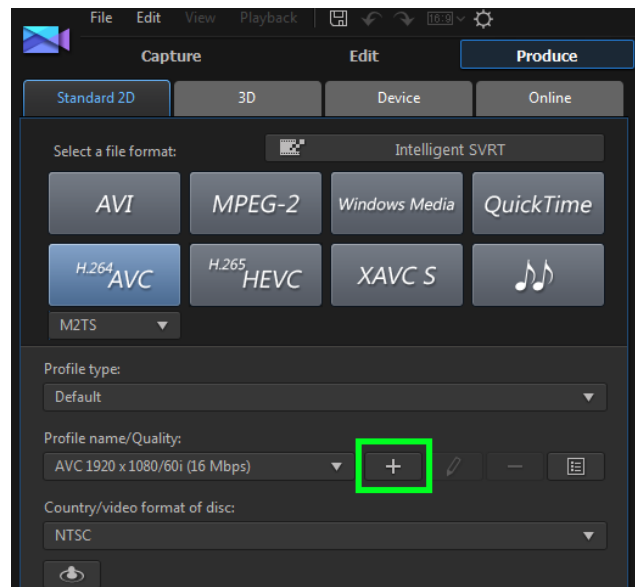


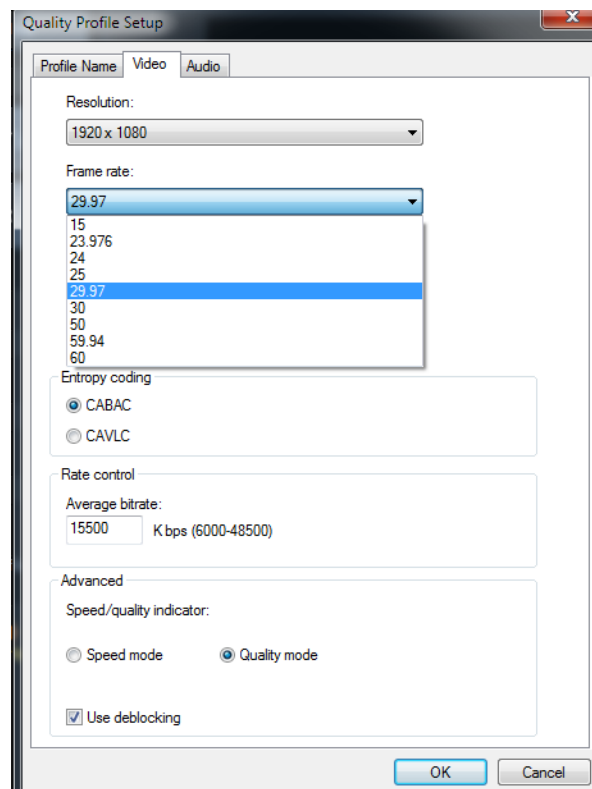
# Creating Custom Profiles for PowerDirector

## Editing Profile.ini

In the **Produce module** of PowerDirector, it's possible to create custom profiles for MPEG-2, QuickTime MOV, AVC H.264, HEVC H.265, & XAVC S, by clicking on the + button.



Various parameters can be changed by using the dropdown options.



If the options needed aren't available, a custom profile can be made by editing the **Profile.ini** document.

The **Profile.ini** can be opened, edited & saved using  
Windows **Notepad**, **WordPad**, **Notepad++** & other similar software.

**Scroll down**

**for**



**step-by-step**

**examples**

**of**

**custom profiles**



**editing**

**profile.ini**



## Example 1 - Customising an AVC H.264 MPEG-4 Profile to 1920X1080 @ 3MBps

In this example, an **MPEG-4 (1920X1080)** profile is needed with a bitrate of **3MBps**, which is lower than the minimum allowed

1. In the **Produce module**, select an MPEG-4 1920x1080 profile & click the **+** button to make a custom profile
2. Set the bitrate at 6000kbps (which is the minimum allowed)
3. Give the profile a name so it's easy to locate later. This one is named **1920x1080 @ 3MBps**
4. Save your project & close PD (not completely necessary). Now - go to **C:\Users\user name\AppData\Roaming\CyberLink\PowerDirector\13.0** (or whichever version of PD you're using) and locate "**Profile.ini**"
5. Open the .ini file in notepad
6. Locate the custom profile you just made (it'll be the last one)

[illegible]

7. Scan through the text to find **<Video BitRate>6000000<Min BitRate>3000000<Max BitRate>6500000**

[illegible]

8. Change the number values only to **<Video BitRate>3000000<Min BitRate>3000000<Max BitRate>3000000**

[illegible]

- ## 9. Save & close notepad

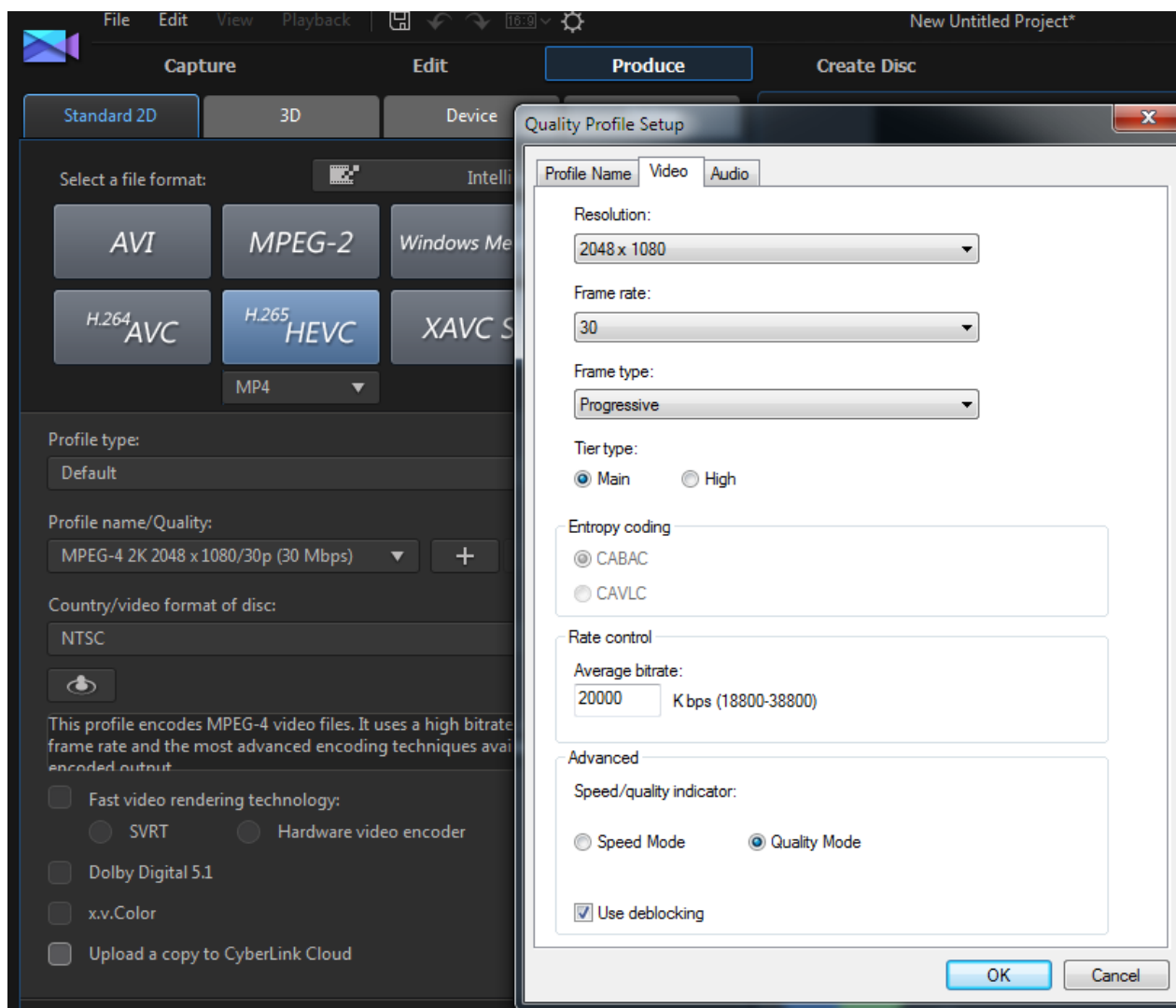
Now - open your project in PD & go to Produce > AVC H.264 MPEG-4 & select your custom profile from the dropdown menu.

- 10. Name your video & hit Start.**

The profile you just created will always be available to you in the **AVC H.264 MPEG-4** Custom dropdown.

## Example 2 - Customising a H.265 HEVC MPEG-4 Profile to 2.7K (2704x1524) @ 20MBps

1. In the Produce module, select H.265 HEVC MP4 2K (2048x1080) & click the **+** button to make a custom profile
2. Give the profile a **name**, or remember its label (e.g. 2.7K @ 20Mbps)
3. Under the Video tab, there is no 2704x1524 option, but leave the settings as they are. Change the average bitrate to 20000Kbps



4. Save your project & close PD (not completely necessary).  
Now - go to C:\Users\user name\AppData\Roaming\CyberLink\PowerDirector\13.0 and locate "Profile.ini"
5. Open the .ini file in notepad
6. Locate the custom profile you just made (it'll be the last one – look for the name you gave it)

[illegible]

```
<Class>MPEG-4 HEVC<Name>2.7K @ 20Mbps  
<Description>2.7K @ 20Mbps<Output FileName>  
<DescID>20210<NameID>20197<Group>2<File Format Class>11<Video Format Class>10<Audio Format Class>10<Stream Flag>3<Field Order>0  
<Attribute>4000083<video_BitRate>20000000<Min BitRate>10000000<Max BitRate>20500000<video Quality>0<video width>2048<video Height>1080<Frame Rate>30.000000<Profile Level>65280  
<Pattern>1BVBVBPBVBPBVBPBVBPBVBPBVBPBVBPBVBPZPre Processing>0<Resize>1<Flip Video>0<Speed Quality Indicator>6<Interlacing>0<Encoder Mode>0<App Type>2<Dynamic GOP>0<Deblock>1<EntryMode>1<Encoder Type>32<Audio Layer>2<Audio Mode>2<Audio BitRate>384000<Audio Channels>2<Audio SamplesPerSec>1<Audio BitsPerSample>1<Misc>0<SamplesPerFrame>0&&
```

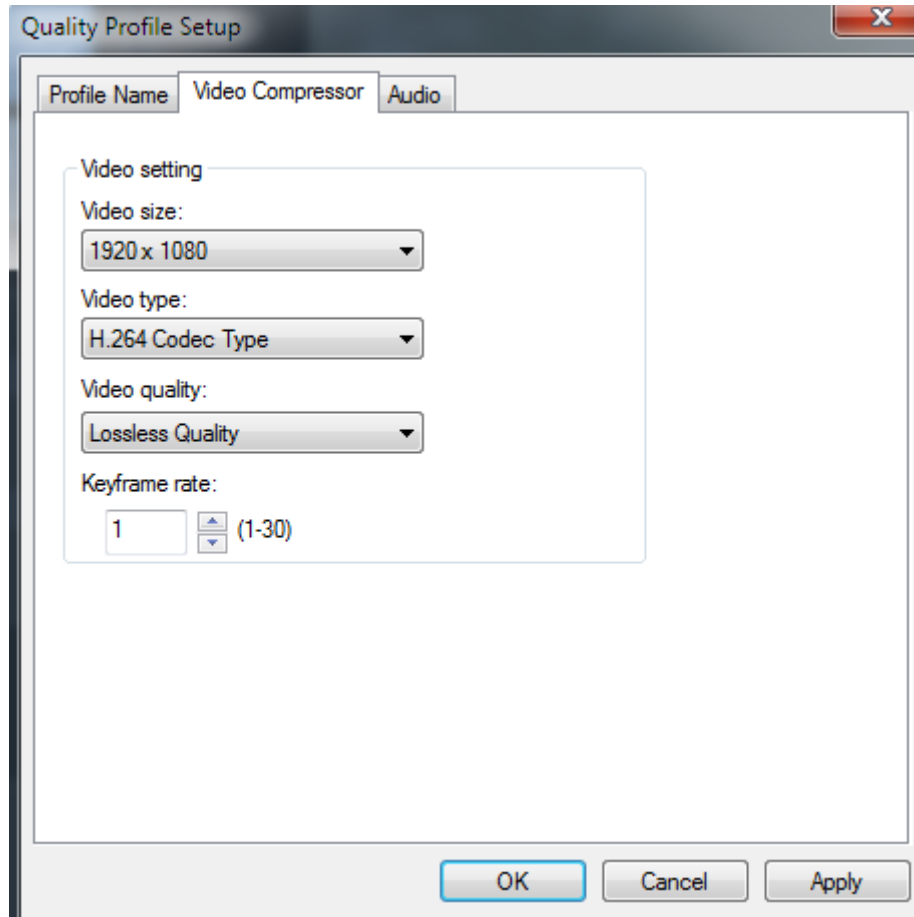
```
<&Class>MPEG-4 HEVC<Name>2.7K @ 20Mbps  
<Description>2.7K @ 20Mbps<Output FileName>  
<DescID>20210<NameID>20197<Group>2<File Format Class>11<Video Format Class>10<Audio Format Class>10<Stream Flag>3<Field Order>0  
<Attributes>40000083<Video BitRate>200000000<Min BitRate>10000000<Max BitRate>205000000<Video Quality>0:  
Video width>2704<Video Height>1524<Frame Rate>30.000000<Profile Level>65280  
<Pattern>1BVBVBVBVBVBVBVBVBVBVBVBVBVBVBVBVBVBVBVBPre Processing>0<Resize>1<Flip Video>0<Speed Quality Indicator>6<Interlacing>0<Encoder Mode>0<App Type>2<Dynamic GOP>0<Deblock>1<EntryMode>1<Encoder Type>32<Audio Layer>2<Audio Mode>2<Audio BitRate>384000<Audio Channels>2<Audio SamplesPerSec>1  
<Audio BitsPerSample>1<Misc>0<SamplesPerFrame>0&&
```

Now - open your project in PD & go to Produce > H.265 MP4 & select your custom profile from the dropdown menu. It will be listed as **2.7K @ 20MBps** so it's easy to find.

The profile you just created will always be available to you in the **H.265 HEVC MP4** > Custom dropdown

### Example 3 - Customising a QuickTime MOV Profile to 1920x1080 @ 24MBps

1. In the Produce module, select MOV – QuickTime Full HD Quality & click the + button to make a custom profile
2. Under the Video tab, there is no option to specify video bitrate, but leave the settings as they are



3. Give the profile a **name**, or remember its label (e.g. 1920x1080 @ 24MBps)
  4. Save your project & close PD (not completely necessary).
- Now - go to C:\Users\user name\AppData\Roaming\CyberLink\PowerDirector\13.0 and locate "Profile.ini"
5. Open the .ini file in notepad
  6. Locate the custom profile you just made (it'll be the last one – look for the name you gave it)

```
&<Class>QuickTime<Name>1920x1080 @ 24MBps<Description>Custom Profile
-2<Output FileName> <DescID>16744<NameID>16745<Group>2<File Format Class>5<Video Format Class>5<Audio
Format Class>0<Stream Flag>3<Field Order>0<Attribute>83<Video Width>1920<Video Height>1080<KeyFrame Rate>1
<Frame Rate>29.969999<Video Type>1635148593<Video Quality>1024<Video BitRate>15500000<Audio
Type>1633772320<Audio Channels>2<Audio SamplesPerSec>48000&&
```

7. Scan through to locate "<Video BitRate>15500000<

```
&<Class>QuickTime<Name>1920x1080 @ 24MBps<Description>Custom Profile
-2<Output FileName> <DescID>16744<NameID>16745<Group>2<File Format Class>5<Video Format Class>5<Audio
Format Class>0<Stream Flag>3<Field Order>0<Attribute>83<Video Width>1920<Video Height>1080<KeyFrame Rate>1
<Frame Rate>29.969999<Video Type>1635148593<Video Quality>1024<Video BitRate>15500000<Audio
Type>1633772320<Audio Channels>2<Audio SamplesPerSec>48000&&
```

8. Change the number to <Video BitRate>**24000000**<

```
&<Class>QuickTime<Name>1920x1080 @ 24Mbps<Description>Custom Profile  
-2<Output FileName> <DescID>16744<NameID>16745<Group>2<File Format Class>5<Video Format Class>5<Audio  
Format Class>0<Stream Flag>3<Field Order>0<Attribute>83<Video width>1920<Video Height>1080<KeyFrame Rate>1  
<Frame Rate>29.969999<Video Type>1635148593<Video Quality>1024<Video BitRate>24000000<Audio  
Type>1633772320<Audio Channels>2<Audio SamplesPerSec>48000&&
```

9. Save & close notepad

Now - open your project in PD & go to Produce > MOV & select your custom profile from the dropdown menu. It will be listed as **1920x1080 @ 24Mbps** so it's easy to find.

10. Name your video & hit Start.

The profile you just created will always be available to you in the **QuickTime MOV** > Custom dropdown.

Brought to you by

