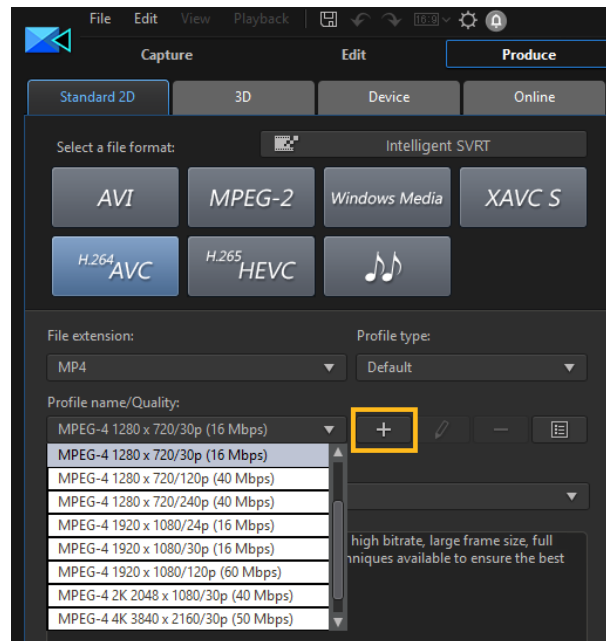


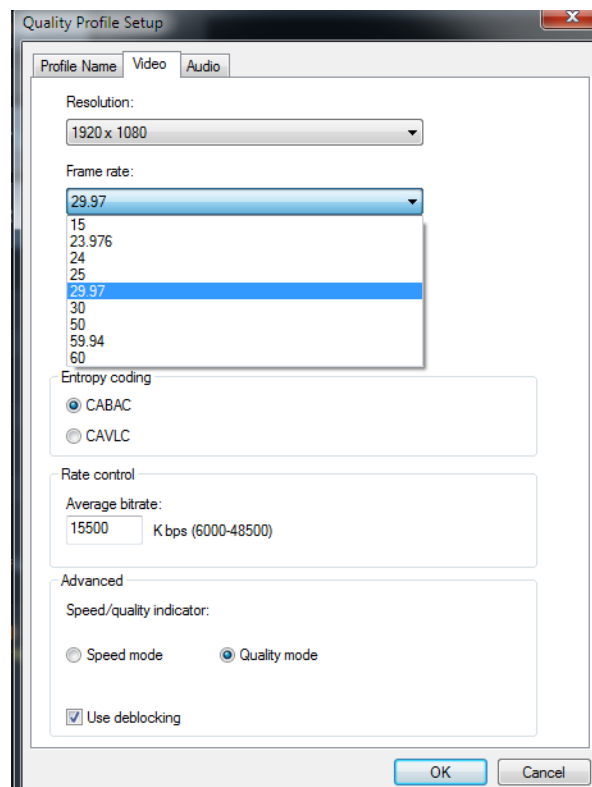
Creating Custom Profiles for PowerDirector

Editing Profile.ini

In the **Produce module** of PowerDirector, it's possible to create custom profiles for MPEG-2, AVC H.264, HEVC H.265, & XAVC S, by clicking on the **+** button.



Various parameters can be changed by using the dropdown options.



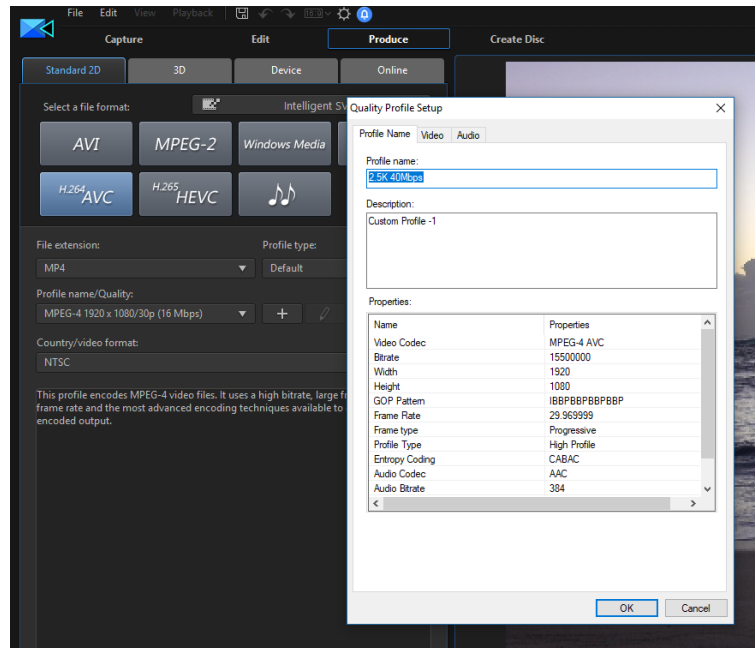
If the options needed aren't available, a custom profile can be made by editing the **Profile.ini** document.

Example - Customising an AVC H.264 MPEG-4 Profile to 2560x1440 @ 30 Mbps

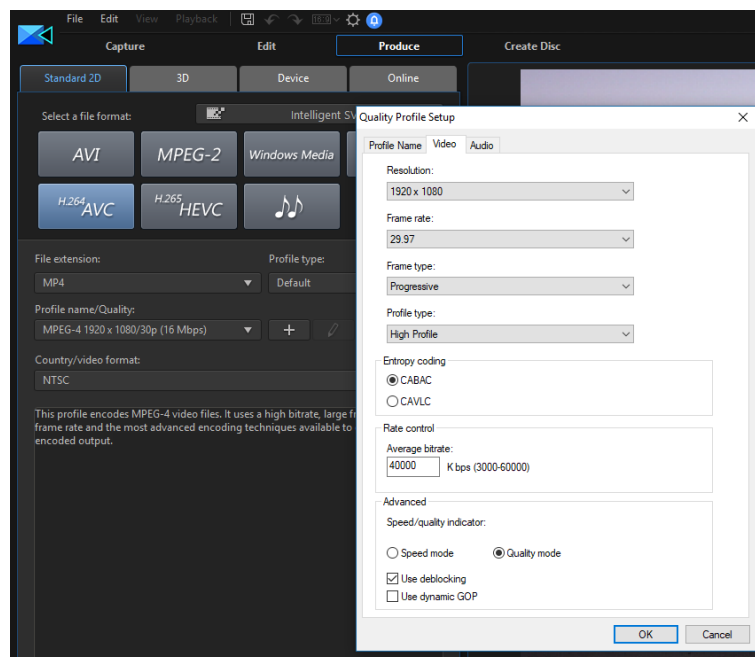
In this example, an **MPEG-4 (2560x1440)** profile is needed with a bitrate of **40Mbps**

1. In the **Produce module**, select an AVC H.264 MP4 1920x1080 profile & click the **+** button to make a custom profile... *or choose any profile that closely matches what you want.*

2. Give the profile a name so it's easy to locate later. This one is named **2.5K 40Mbps**



3. Set the bitrate at **40000kbps** (40Mbps) then click OK.



4. Save your project & close PD (not completely necessary). Now - go to **C:\Users\YNOT\AppData\Roaming\CyberLink\PowerDirector\16.0\UserConfigure** (or whichever version of PD you're using) and locate **"Profile.ini"**

5. Open the Profile.ini in notepad

6. Locate the custom profile you just made (it'll be the last one) Look for **<Name>2.5K 40Mbps<**

7. Scan through the text to find **<Video Width>1920<Video Height>1080<**

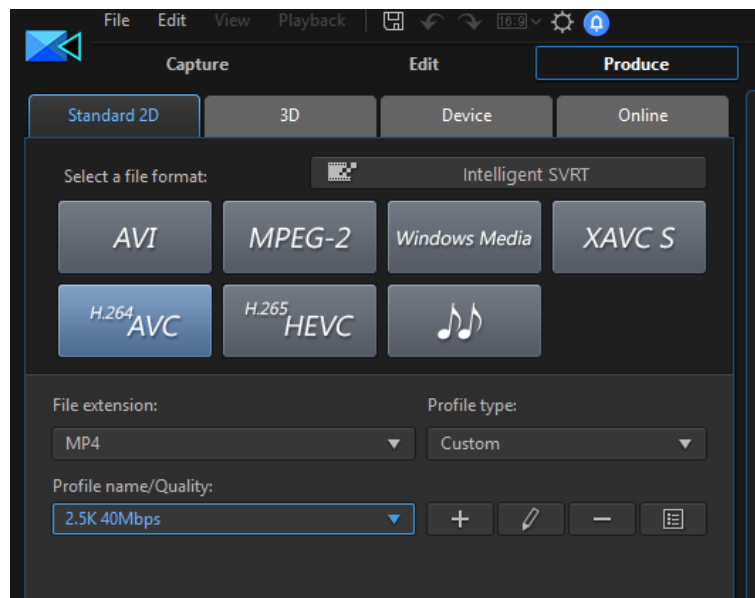
```
<SamplesPerFrame>0&&&<Class>MPEG-4 AVC<Name>2.5K 40Mbps<Description>Custom Profile -1<Output  
FileName> <DescID>11920<NameID>11921<Group>2<File Format Class>11<Video Format Class>8<Audio  
Format Class>8<Stream Flag>3<Field Order>0<Attribute>10040083<Video BitRate>40000000<Min  
BitRate>20000000<Max BitRate>40500000<Video Quality>0<Video Width>1920<Video Height>1080<Frame  
Rate>29.969999<Profile Level>65380<Pattern>IBBPBBPBBPBBP<Pre Processing>0<Resize>1<Flip  
Video>0<Speed Quality Indicator>6<Interlacing>0<Encoder Mode>0<App Type>2<Dynamic GOP>0  
<Deblock>1<EntryMode>1<Encoder Type>128<Audio Layer>2<Audio Mode>2<Audio BitRate>384000<Audio  
Channels>2<Audio SamplesPerSec>1<Audio BitsPerSample>1<Misc>0<SamplesPerFrame>0&&&
```

8. Change the number values only to **<Video Width>2560<Video Height>1440<**

```
<SamplesPerFrame>0&&&<Class>MPEG-4 AVC<Name>2.5K 40Mbps<Description>Custom Profile -1<Output  
FileName> <DescID>11920<NameID>11921<Group>2<File Format Class>11<Video Format Class>8<Audio  
Format Class>8<Stream Flag>3<Field Order>0<Attribute>10040083<Video BitRate>40000000<Min  
BitRate>20000000<Max BitRate>40500000<Video Quality>0<Video Width>2560<Video Height>1440<Frame  
Rate>29.969999<Profile Level>65380<Pattern>IBBPBBPBBPBBP<Pre Processing>0<Resize>1<Flip  
Video>0<Speed Quality Indicator>6<Interlacing>0<Encoder Mode>0<App Type>2<Dynamic GOP>0  
<Deblock>1<EntryMode>1<Encoder Type>128<Audio Layer>2<Audio Mode>2<Audio BitRate>384000<Audio  
Channels>2<Audio SamplesPerSec>1<Audio BitsPerSample>1<Misc>0<SamplesPerFrame>0&&&
```

9. **Save** & close notepad

10. Now - open your project in PD & go to Produce > AVC H.264 MP4 & select your custom profile from the dropdown menu.



The profile you just created will always be available to you in the **AVC H.264 MP4 Custom** dropdown.

Brought to you by

PD TOOTS

QUICK TIPS