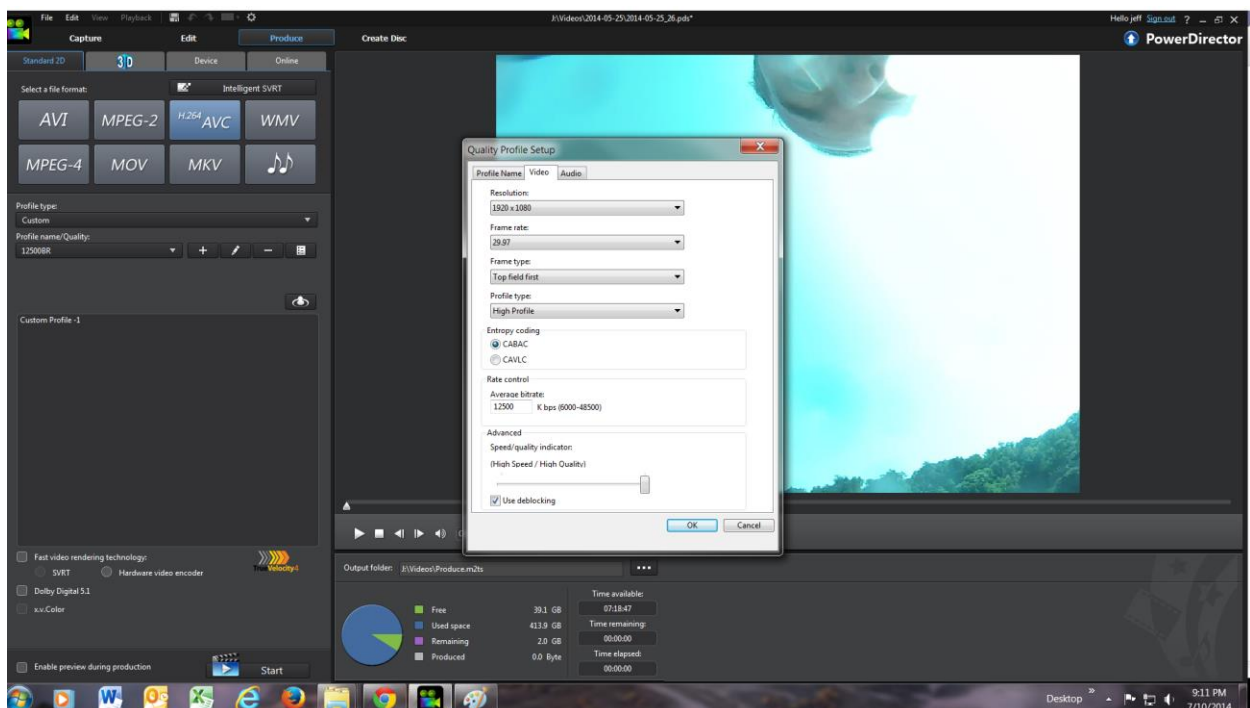


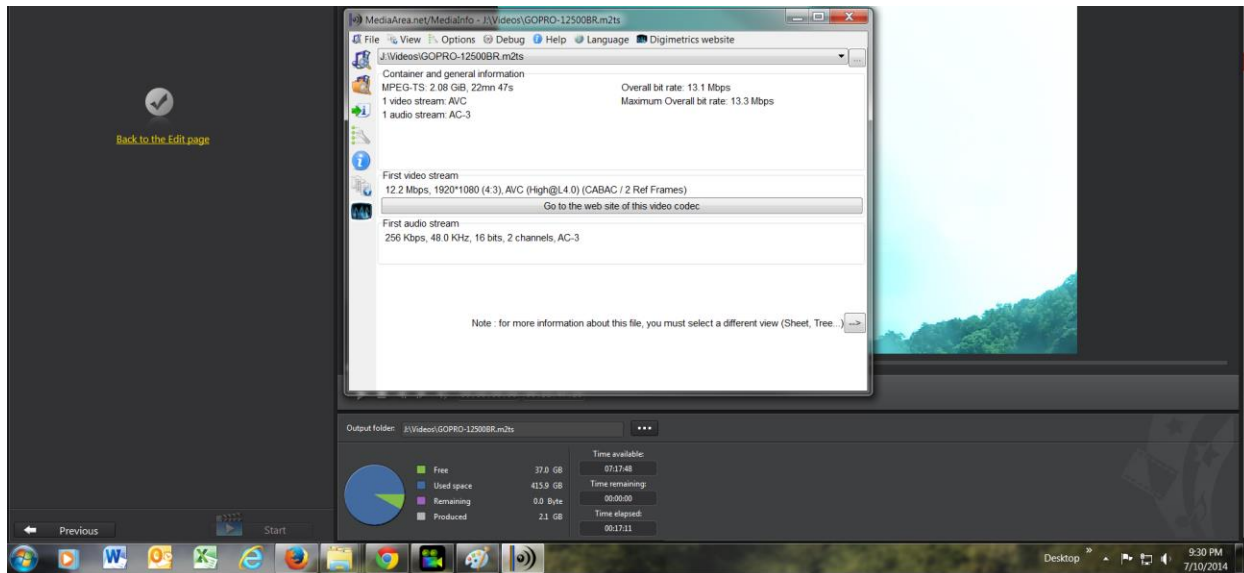
File Info. All MP4s placed into single file. Other Files seem to work ok. I did do a 1GB file like the one below and it was ok. But then I went through all these again with multiple videos and one file that was ok before, the next time came back with 15000 bitrate. I have tried to figure out if it is based on some order.



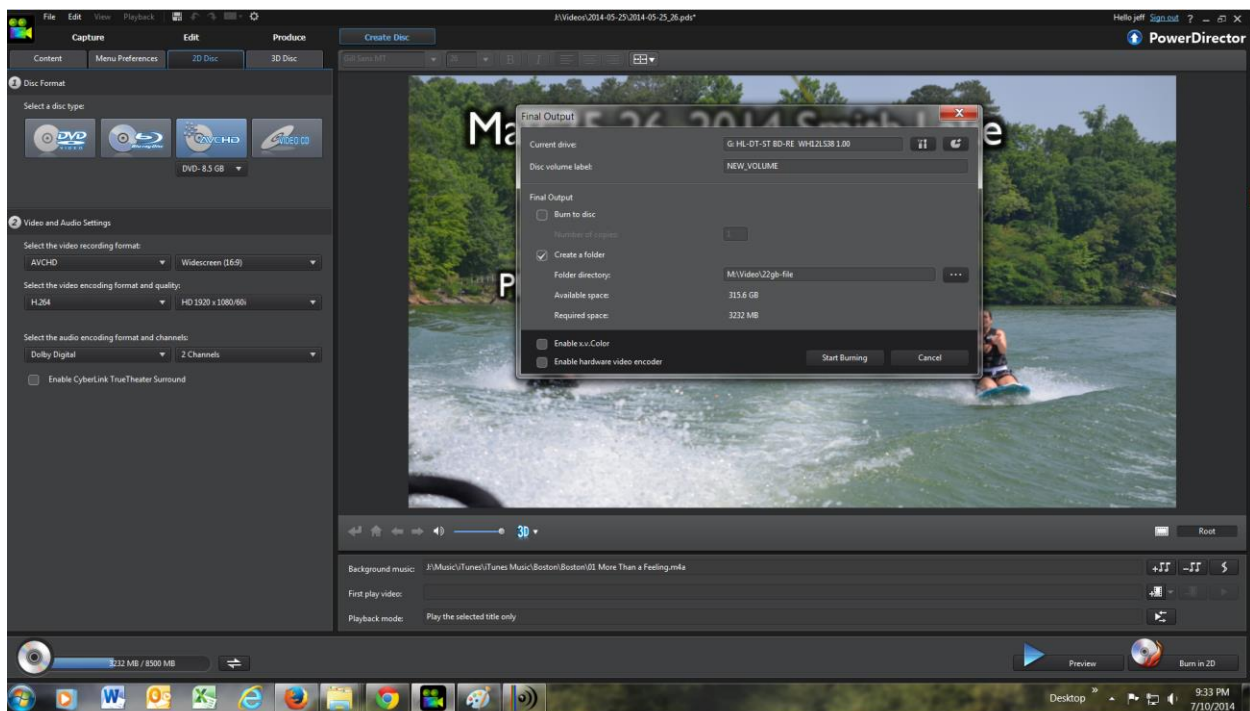
## Produce



## Mediainfo on file after produce



## Create Disc



## Mediainfo on file created from Create Disc

