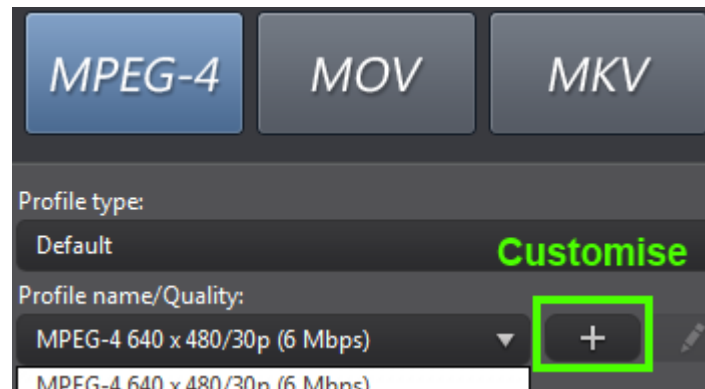


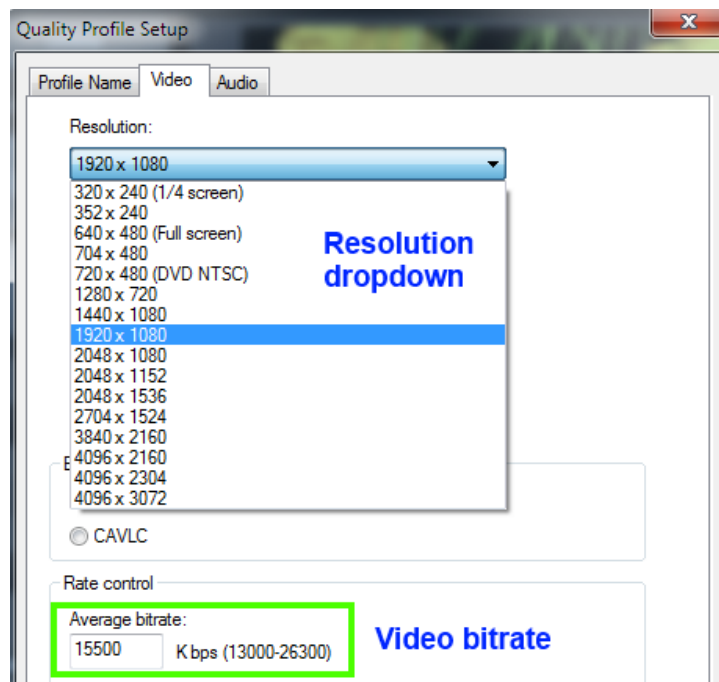
# Creating Custom Profiles for PowerDirector

## - Editing Profile.ini -

In the **Produce module** of PowerDirector, it's possible to create custom profiles for MPEG-2, H.264 AVC, MPEG-4 & MOV, by clicking on the + button.



Various parameters can be changed by using the dropdown options.



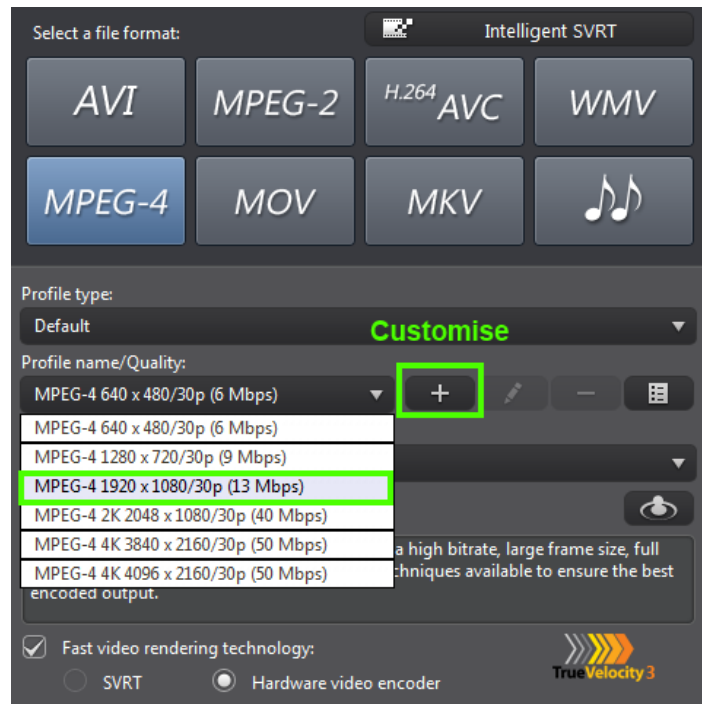
If the options needed aren't available, a custom profile can be made by editing the **Profile.ini** document.

## Example 1 - Customising an MPEG-4 Profile

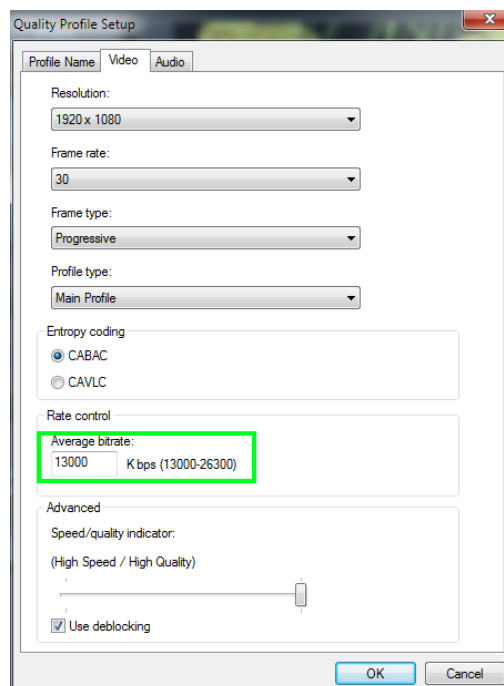
to 1920X1080 @ 10MBps

In this example, an **MPEG-4 (1920X1080)** profile is needed with a bitrate of **10MBps**, which is lower than the minimum allowed

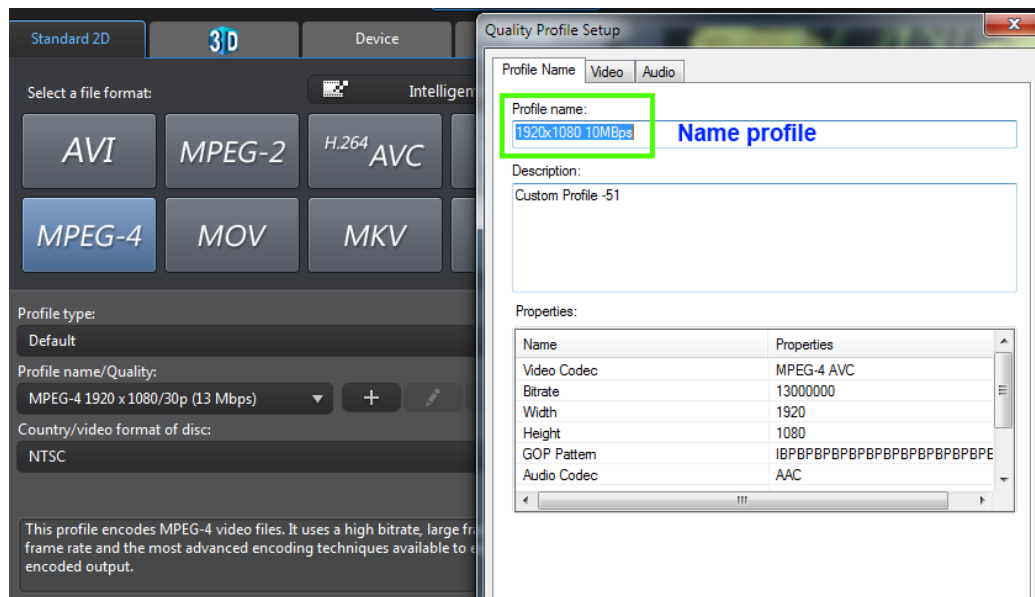
1. In the **Produce module**, select an MPEG-4 1920x1080 profile & click the + button to make a custom profile



2. Set the bitrate at 13000kbps (which is the minimum allowed)



**3.** Give the profile a name so it's easy to locate later. This one is named **1920x1080 10MBps**



**4. Save your project & close PD (not completely necessary).**

Now - go to **C:\Users\user name\AppData\Roaming\CyberLink\PowerDirector\11.0** (or whichever version of PD you're using) and locate "**Profile.ini**"

5. Open the .ini file in notepad

**6.** Locate the custom profile you just made (it'll be the last one)

```
<ProcessName>KES12C11\Tip_Video\Speed_Indicator\Interfacing\<Encoder Mode>0<App Type>2<Dynamic GOP>0<Deblock>1<EntryMode>1<Encoder Type>32<Audio Layer>2<Audio Mode>2<Audio BitRate>192000<Audio Channels>2<Audio SamplesPerSec>1<Audio BitsPerSample>1<Misc>0<SamplesPerFrame>0&&&<Class>MPEG-4 AVC<Name>1920x1080 10Mbps<Description>Custom Profile -51<Output FileName><DescID>11920<NameID>11921<Group>2<File Format Class>11<Video Format Class>8<Audio Format Class>10<Stream Flag>3<Field Order>0
```

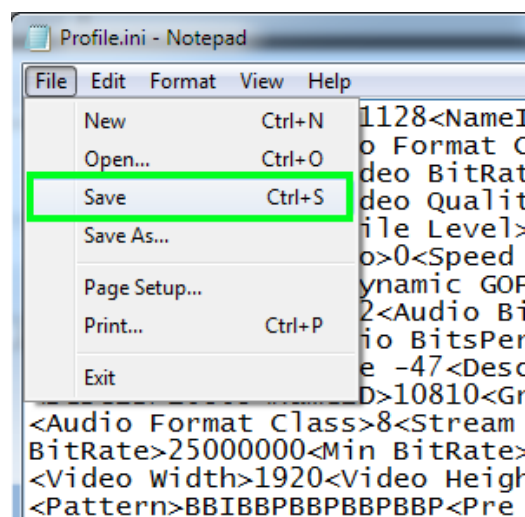
7. Scan through the text to find <Video BitRate>13000000<Min BitRate>6500000<Max BitRate>13500000<"

[illegible]

8. Change the number values only to <Video BitRate>10000000<Min BitRate>10000000<Max BitRate>10000000<"

```
<Class>MPEG-4 AVC<Name>Custom Profile -50<Description>Custom Profile -50  
<Output FileName><DescID>11922<NameID>11923<Group>2<File Format Class>11  
<Video Format Class>8<Audio Format Class>10<Stream Flag>3<Field Order>0  
<Attribute>40083<Video BitRate>13000000<Min BitRate>6500000<Max  
BitRate>13500000<Video Quality>0<Video Width>1280<Video Height>720<Frame  
Rate>30.000000<Profile Level>65357<Pattern>IBPBPBPPBPBPPBPBPPBPBPPBPBP<Pre  
Processing>0<Resize>1<Flip Video>0<Speed Quality Indicator>6<Interlacing>0  
<Encoder Mode>0<App Type>2<Dynamic GOP>0<Deblock>1<EntryMode>1<Encoder  
Type>32<Audio Layer>2<Audio Mode>2<Audio BitRate>192000<Audio Channels>2  
<Audio SamplesPerSec>1<Audio BitsPerSample>1<Misc>0<SamplesPerFrame>0&&&  
<Class>MPEG-4 AVC<Name>1920x1080 10Mbps<Description>Custom Profile -51<Output  
FileName><DescID>11920<NameID>11921<Group>2<File Format Class>11<Video  
Format Class>8<Audio Format Class>10<Stream Flag>3<Field Order>0  
<Attribute>40083<Video BitRate>10000000<Min BitRate>10000000<Max  
BitRate>10000000<Video Quality>0<Video Width>1920<Video Height>1080<Frame  
Rate>30.000000<Profile Level>65357<Pattern>IBPBPBPPBPBPPBPBPPBPBPPBPBP<Pre  
Processing>0<Resize>1<Flip Video>0<Speed Quality Indicator>6<Interlacing>0  
<Encoder Mode>0<App Type>2<Dynamic GOP>0<Deblock>1<EntryMode>1<Encoder  
Type>32<Audio Layer>2<Audio Mode>2<Audio BitRate>384000<Audio Channels>2  
<Audio SamplesPerSec>1<Audio BitsPerSample>1<Misc>0<SamplesPerFrame>0&&
```

## 9. Save & close notepad



Now - open your project in PD & go to Produce > MPEG-4 & select your custom profile from the dropdown menu.

**10.** Name your video & hit Start.

The profile you just created will always be available to you in the Custom dropdown.

## Example 2 - Customising a MOV Profile

to 1280x720 @ 10MBps

1. In the Produce module, select MOV – QuickTime Full HD Quality & click the + button to make a custom profile
2. Under the Video tab, there is no 1280x720 option, but leave the settings as they are
3. Give the profile a **name**, or remember its label (e.g. MOV 720p 10MBps)
4. Save your project & close PD (not completely necessary).

Now - go to C:\Users\user name\AppData\Roaming\CyberLink\PowerDirector\11.0 and locate "Profile.ini"

5. Open the .ini file in notepad
6. Locate the custom profile you just made (it'll be the last one – look for the name you gave it)
7. Scan through the text to find "<Video Width>**1920**<Video Height>**1080**<" and change the numbers (nothing else) to <Video Width>**1280**<Video Height>**720**<
8. Keep scanning to locate "<Video BitRate>15500000<" and change the number to <Video BitRate>10000000<
9. Save & close notepad

Now - open your project in PD & go to Produce > MOV & select your custom profile from the dropdown menu. It will be listed as **MOV 720p 10MBps** so it's easy to find.

10. Name your video & hit Start.

The profile you just created will always be available to you in the MOV > Custom dropdown.