

Creating a Disc Menu

PowerDirector Ultimate

This is a tutorial for creating a Disc Menu in PowerDirector Ultimate from scratch. You have to be a little familiar with the screen layout. Some of the selections have sub menu choices.

The default opening screen is shown to the right. Select the Menu Preferences tab to start. A new screen opens as per Fig2. with a default template.

Select the “Color-Swatches” with the paint brush icon, this is for creating from scratch.

This is the design screen you are to create your menu the first is the ‘Root Menu’.

The icon 1 is to import the background Image or video to the ‘Root Menu’. Don’t worry just now about the My Video or the Item 1 labels they get change when you actually use the menu, You can change how they look by the Left set of options.

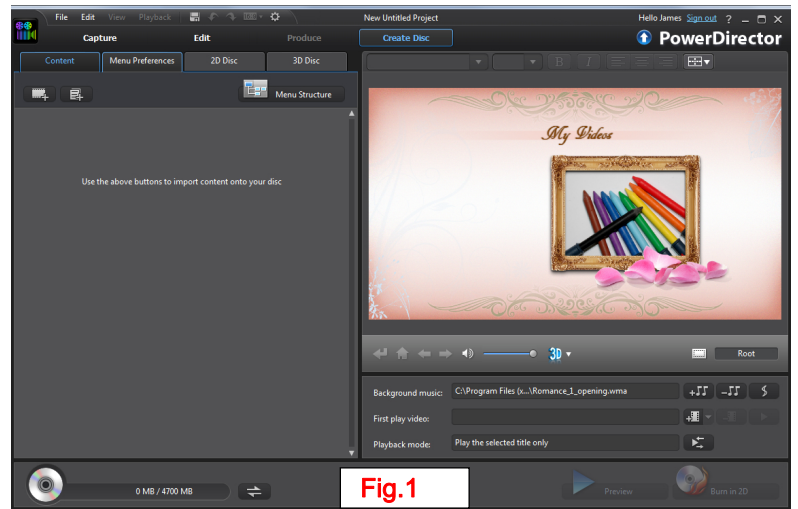


Fig.1

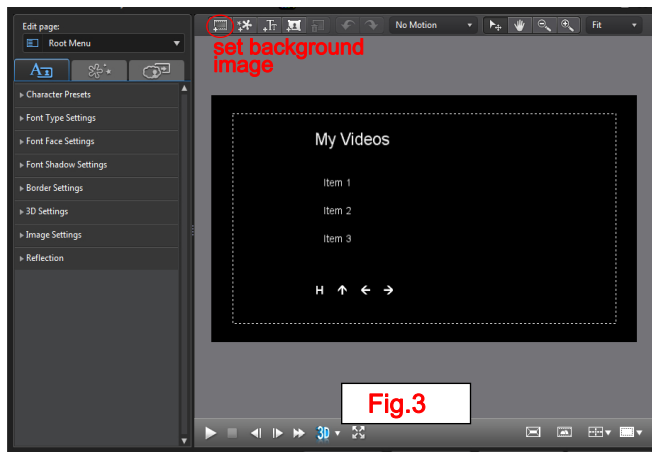


Fig.3

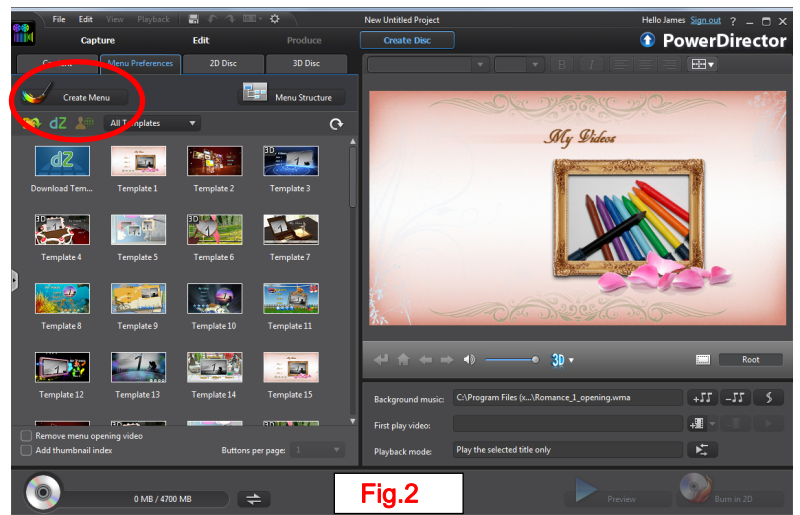


Fig.2

Finished design



Creating a Disc Menu

PowerDirector Ultimate

Disc Menu-*Chapters/Titles*

The concept for creating this menu are basically the same, with one or two exceptions, the size of the graphics (with image1 and two) are limited to 512X512 pixel size.

The number of 'Buttons' are also limited to 4 per page, but you can have more that one page.

Also I found out that titles assigned in the time line do not correspond to the 'Chapter/Titles' that are defined in this menu. These are defined by the content added when you create the 'Disc Menu' and are based on 'Produced' videos or PDS files saved from previous projects.

Now we have the 'Disc Menu' template created you 'Save as' giving it a name. PD goes through a save process and the thumbnails are updated. It will show all menu templates, but if you go to tab at top it will show categories select custom menus and the one you created should show up there, select it and "Apply to all Pages".

When you have finished the above procedures and applied the template now you can start modifying for the final menu. You can change the "My Video" to something appropriate, and the "Item 1", "item2" etc. to something corresponding to the content.

The "item 1" refer to the chapter names that you have within the project. These can be videos produced previously and saved as 'productions or previously created PDS files but the PDS files are 'script files that link to content that was contained in that session not a produced project so the videos, images have to be accessible, whereas the Produced projects are completed projects.

The Fig.5 shows the preview of the template you have applied.

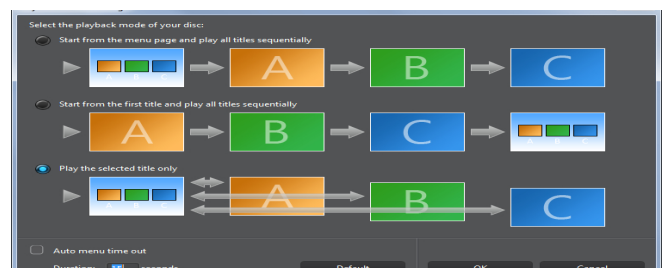


As you import projects/pds files 'Play' 'Chapters' are created as per the name of the file added. You can rename them by one of two methods..1) select the text on the preview screen and give it a name or 2)on the left hand side select the object and right click on the name and give a new one, likewise the same can be accomplished to the MY Video title.

I should mention here that these chapter 'names' are not the same as the chapter names given on the time-lines on previously created productions. Depending on the number of 'Buttons' assigned at the creation of the menu (maximum 4 per page) governs the # displayed each screen. Example if you set the template to 2 buttons in Button Layout then if you have 4 chapters another page is created with additional buttons using the same theme.

The bottom section of the preview screen gives some for music, First Play video (if you have created one), and the sequence the menu plays (bottom choice).

The top choice is plays all titles sequentially, second is start from first title and play all sequentially and the last is play selected title only (then returns to main menu).



Creating a Disc Menu

PowerDirector Ultimate

